

BONDS TRAVEL LTD

— HONG KONG —

9 DAYS LUXURY IN THE WILD

(Lewa Conservancy | Loisaba | Masai Mara)

Tour Highlights

- *Luxury Accommodation*
- *Flight Package*
- *Game drives in Landcruiser 4x4*
- *Meals and Drinks included*
- *Other activities included*



Day 1 - Nairobi (Arrival)

Upon arrival at Jomo Kenyatta International Airport in Nairobi, you will be met by Kikwetu Cultural Adventures representative who will transfer you to your luxury hotel in the city for dinner and overnight.

Main Destination: Nairobi City

Activities: Transfer

Accommodation: Fairmont The Norfolk Hotel

Meals Plan: Dinner



Fairmont The Norfolk boasts of 27 luxurious suites and 143 rooms set around tranquil tropical gardens, a heated outdoor swimming pool and a health club with a fitness centre and indulgent spa facilities. The rooms combine classic elegance and modern design with discreet technology. Many rooms offer breathtaking elevated views of the landscaped courtyard, while the signature suites are an excellent choice for guests seeking to experience luxury intertwined with the rich history of the city.

Day 2 - Fly to the Wild (Lewa Wildlife Conservancy)

Today after your breakfast you will be transferred to Wilson Airport for your scheduled flight to Lewa Wildlife Conservancy. On arrival you will be met at the airstrip and transferred to your lodge. You will settle down for lunch followed by a short rest before you leave for an evening game drive in the conservancy. After your extensive game drive, you will return back to your lodge for dinner and overnight.

Lewa Wildlife Conservancy is home to all of the Big Five. It has good populations of black rhino and white rhino and sightings are very common. Elephant and buffalo are plentiful and there is a good variety of predators including cheetah, lion, leopard and wild dog. Lewa swamp is home to a few hippo. Antelopes are plenty including eland, impala, defassa waterbuck and Grant's gazelle.





Main Destination: Lewa Wildlife Conservancy

Approximate Flight Time (Between Destination): 1 hour

Accommodation: Elewana Lewa Safari Camp

Includes: Full Board Accommodation, all meals and drinks (excluding champagne, private cellar wines and spirits), shared and scheduled game drives and activities, guided walking safari, sundowners, bush breakfast and transfers to and from airstrips, laundry, service charge, catering levy and VAT.



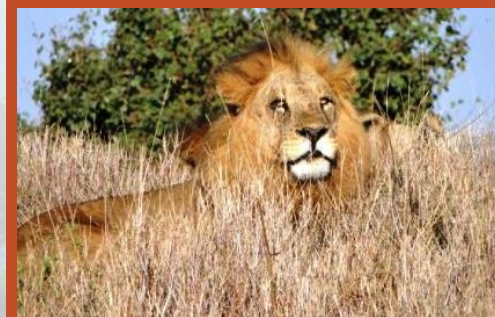
Elewana Lewa Safari Camp is a first rate lodge taking on the feel of an old classic safari with thatched roofs and sanded wooden floors, with modern comforts, the 13 guest tents at the lodge are complemented by a cosy central area with a well-kept garden, which is overlooked by a large veranda and swimming pool. The lounge has a log fire, lit during chillier evenings, while other shared areas include a dining area and spa.

Day 3 - Explore the wonders of Nature (Lewa Conservancy)

After enjoying a delicious breakfast, it will be another day to enjoy what nature has to offer. You will head for a morning game drive later return to the camp. You will have time to rest and just enjoy the spectacular views as you sip your favorite drink or engage in any of the activities offered at the camp. Settle down for a hot sumptuous lunch followed by another short rest before leaving for evening game drive. Return back to your lodge for dinner and overnight.

Game drives are done using open vehicles which are specially fitted, 4x4 Toyota Landcruisers. The vehicles are unrivaled with feature enhancements specifically designed for comfort and photography – open sided with 3 rows of seats, photographic equipment stands, and charging sockets. Clients will share game drives unless “exclusive use of vehicle” has been pre booked at an extra charge.

All the guides are first class, with Bronze or Silver level Kenya Professional Safari Guides Association certification, and they also receive training directly from the Conservancy to the “Lewa Standard”.



Main Destination: Lewa Wildlife Conservancy

Accommodation: Elewana Lewa Safari Camp

Includes: Full Board Accommodation, all meals and drinks (excluding champagne, private cellar wines and spirits), shared and scheduled game drives and activities, guided walking safari - 2hrs, sundowners, bush breakfast and transfers to and from airstrips, laundry, service charge, catering levy and VAT.

Optional Activities - Camel Riding within the Conservancy, Exclusive use of a Safari Vehicle with Diver Guide, Guided Walking Safaris, 4 hrs, Horse Riding within the Conservancy, Night Game Drive, 2 hrs (Min. 2 guests), Visit to Il Ngwesi cultural boma min - 2 pax



Day 4 - Road transfer to Loisaba Conservancy (Revive your mind)

After your breakfast you will be transferred by road to Loisaba Conservancy. This drive takes approximately 3.5 hours through beautiful sceneries. You will arrive at your lodge in good time for lunch. Once you have checked in you will then settle down for lunch. After lunch you will have some free time just to relax and marvel at the beauty of the conservancy from your lodge. In the evening you will set out for a game drive before returning back for dinner and overnight.

Loisaba conservancy is a haven for more than 260 bird and 50 mammal species. Alongside the more common wildlife, Loisaba provides critical habitat and a migration corridor 800 elephants, large herds of buffalo, dozens of the endangered Grevy's zebra, towers of endangered reticulated giraffes and the beautiful greater kudu. The cat population is thriving, with over three lion prides on Loisaba at one time and numerous leopards and cheetahs. To top it off the African wild dog, thought for many years to be extinct in the region, are once again being sighted regularly.





Main Destination: Loisaba Conservancy

Approximate Travel Time (Between Destination): 3.5 hours

Accommodation: Elewana Loisaba Tented Camp

Includes: Full Board Accommodation, all meals and drinks (excluding champagne, private cellar wines and spirits) shared and scheduled game drives and activities including a visit to our host Samburu village, guided walking safari, sundowners, bush breakfast and transfers to and from designated airstrips, laundry, service charge, catering levy and VAT.



The camp boasts of 12 spacious and airy tents that are custom-designed with large floor-to-ceiling doors and windows, polished wood floors, stylish modern furnishings and wide verandahs. The bathrooms are luxurious with flush toilets, double-basin vanity and solar-heated hot water cascading from a rainfall shower to deliver a revitalizing cleanse after an action-packed day. Each tent enjoys an expansive view over the Laikipia plains.

Day 5 - Rejuvenate your body and soul (Loisaba Conservancy)

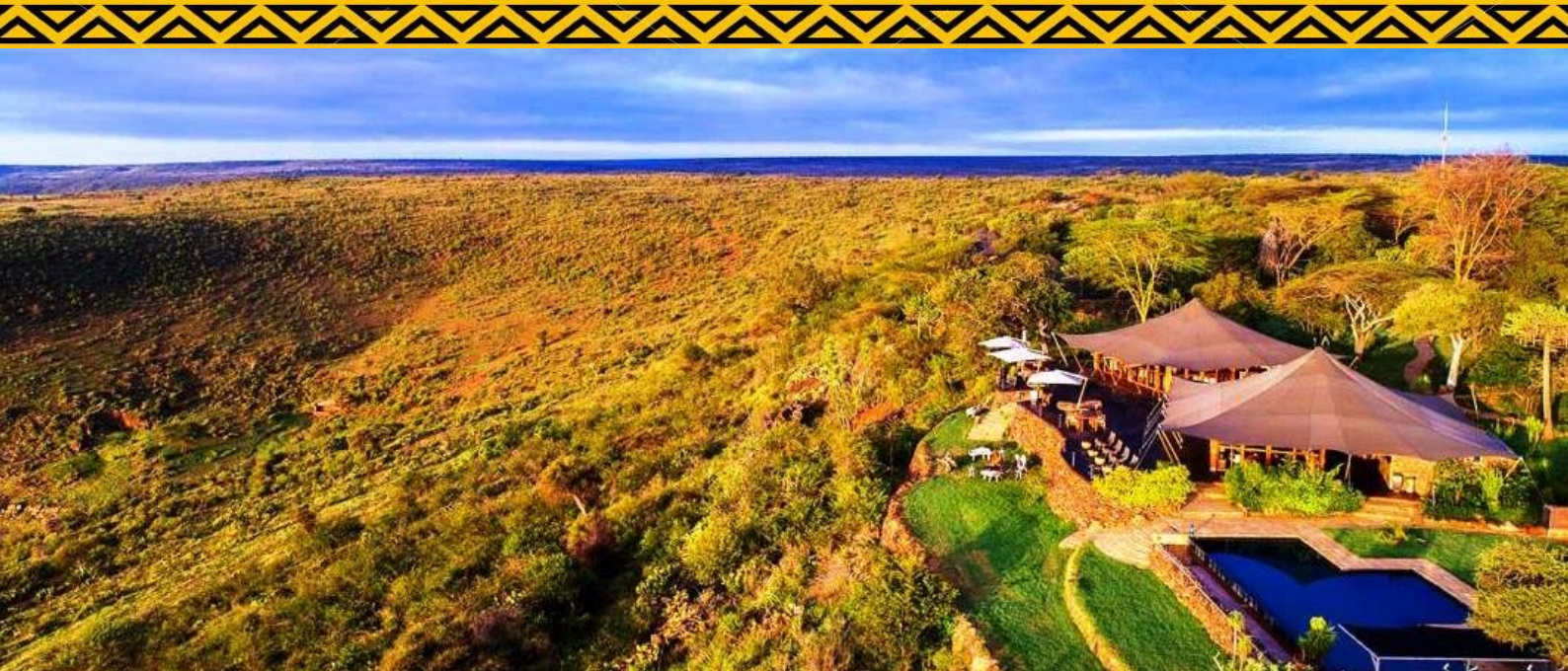
Today you have another chance in Loisaba to revive your mind, rejuvenate your body and revitalize your soul with the abundant wildlife in this conservancy as well as breathtaking views. You will start your morning by taking a hearty breakfast followed by morning game drive. You will return back to the lodge for lunch. After lunch there will be enough time to engage in other activities before you leave for the evening game drive. You will end the day with a beautiful sunset as you return back to the lodge for dinner and overnight.

Main Destination: Loisaba Conservancy

Accommodation: Elewana Loisaba Tented Camp

Includes: Full Board Accommodation, all meals and drinks (excluding champagne, private cellar wines and spirits) shared and scheduled game drives and activities including a visit to our host Samburu village, guided walking safari, sundowners, bush breakfast and transfers to and from designated airstrips, laundry, service charge, catering levy and VAT.





Day 6 - Flight to the Paradise (Masai Mara National Reserve)

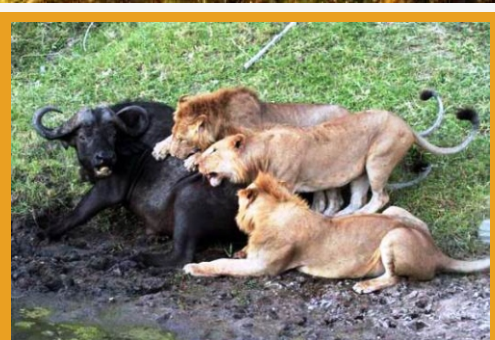
On this day after breakfast, you will be transferred to the airstrip for a scheduled flight to the Masai Mara, one of the highlights of travel to Kenya. On arrival in Masai Mara, you will be picked and transferred to your lodge where you will check in and settle down for lunch. After lunch you will have sometime to rest before you leave for your evening game drive. You will later return to your lodge for a delicious dinner and overnight.

Main Destination: Masai Mara National Reserve

Accommodation: Elewana Sand River Masai Mara

Approximate Flight Time (Between Destination): 1 hour 30min

Includes: Full Board Accommodation, all meals and drinks (excluding champagne, private cellar wines and spirits) shared and scheduled game drives, sundowners, bush breakfasts and transfers to and from designated airstrips, laundry, service charge, catering levy and VAT.



Located on the banks of a river from which it takes its name, Sand River Masai Mara is located within the Masai Mara National Reserve. Situated on a secluded and picturesque site, the camp replicates the heyday of exclusive permanent tented camps of the 1920's. Sand River Masai Mara comprises of 16-tented accommodations - including 1 family tent - each divided into two separate but adjoining campsites, with each area possessing its own designated dining and public areas, thereby creating an increased sense of exclusivity and privacy.

Day 7 and 8 - Explore the African Jewel (Masai Mara)

Enjoy two full days of exceptional game viewing in the Masai Mara. After your breakfast you will head out for morning game drives. You will return to the lodge for lunch after an extensive game drive. Have some time to relax in the lodge before setting out for the evening game drive. Later return to the lodge and enjoy the breath taking African sunset as you settle down for your dinner and overnight.

The Masai Mara is one of the best-known reserves in the whole of Africa. It is globally renowned for its exceptional wildlife. More than 40% of Africa's larger mammals can be found here. Mara is home to the richest concentration of wildlife, including the "Big Five" (elephants, lions, leopards, rhinos, and buffalo), zebras, antelope, gnus, Oribis, hyenas, giraffes, warthogs, gazelles, hartebeests, hippos, crocodiles and others. The park has the largest concentration of African lions, including the black-maned lion. Birdlife is as plentiful as wildlife at the Masai Mara, with over 400 different birds species recorded.

Masai Mara is also known for its spectacular great migration, which takes place every year July to September. During these months more than 1.5 million wildebeest, zebra and antelopes that migrate from the Serengeti to the Mara in search of food and water.

Main Destination: Masai Mara National Reserve

Accommodation: Elewana Sand River Masai Mara

Includes: Full Board Accommodation, all meals and drinks (excluding champagne, private cellar wines and spirits) shared and scheduled game drives, sundowners, bush breakfasts and transfers to and from designated airstrips, laundry, service charge, catering levy and VAT.



Day 9- Flight back to Nairobi

After breakfast at your camp, enjoy a final morning game drive en route to the airstrip for your flight to Wilson Airport. Depending with your flight schedule you may have some time to do shopping within the city. Later on you will be transferred to Jomo Kenyatta International Airport for your onward trip.

End of Tour

NOTE:

You can extend this tour to other African destinations of your interest such as

- Kenya Coast (Diani Beach, Mombasa, Malindi, Kilifi, Lamu etc)
- Zanzibar beach
- Tanzania parks (Serengeti, Ngorongoro, Lake Manyara, Tarangire etc)
- Uganda - Gorilla Trekking in Bwindi
- Victoria Falls
- Other parts of Africa such as Rwanda, Ethiopia, Botswana, Namibia, Zambia, Zimbabwe etc



Cost Includes

- Full Board Accommodation
- Flights to Lewa Conservancy, Masai Mara and Wilson Airport
- Road transfer to Loisaba
- All meals and drinks including teas/coffees, soft drinks, local brand beers, local spirits and house wines (excluding champagne, private cellar wines and spirits)
- Daily morning, afternoon and night game drives in a shared safari vehicle accompanied by an experienced guide
- Guided walking safari
- Ngare Ndare Forest Visit
- Sundowners
- Bush breakfast
- Transfers to and from our designated airstrips
- Laundry,
- Service charge and VAT
- Horse and Camel Riding only in Loisaba

Cost Excludes

- Personal expenses
- Premium branded drinks
- Gratuity for the driver, guide or hotel
- Hot Air Balloon Ride in Masai Mara
- Samburu and Masai Cultural Visit
- Visa Fee
- International Flight
- Optional activities and all other extras
- Horse and Camel Riding only in Lewa

What To Pack for your Safari

THE BASICS

- Trousers (Neutral Colours like beige, khaki, stone and light brown.)
- Shorts (neutral colours)
- T-shirts (neutral colours)
- Long sleeved t-shirt or turtleneck (neutral colours)
- Short sleeved shirts or blouses (neutral colours)
- Long sleeved shirt or blouse (neutral colours)
- Cardigan/pullover
- Scarf/Pashmina
- Shoes (closed walking and sandals)
- One outfit of "smart casual" evening attire
- Swimsuit
- Underwear
- Socks
- Sleepwear
- Flip flops (optional) for pool or shower
- Personal toiletries
- If you are travelling in winter i.e. between April and October (fleece, warm gloves, scarf and beanie are recommended)

THE EXTRAS

- Sun block
- Sunglasses
- Wide brimmed hat
- Lip balm
- Insect repellent and malaria tablets
- Binoculars and a camera are a must
- Chargers for your cell phone, camera, video camera, etc.
- Batteries for small electronics and cameras
- Flashlight
- First aid kit
- Credit and ATM cards
- Driver's licence
- Health-insurance card
- Local guidebooks
- Bird and animal guidebooks
- Passport and photocopies of passport
- Printouts of reservations

KEEPING DOCUMENTS SAFE

Make copies of passport, visas, driver's license, airline tickets/schedule, travel itinerary, credit cards (front and back), travelers' checks' numbers, travel insurance and emergency contact information. Leave a copy with someone at home and put a copy in a travel companion's luggage and email copies to yourself (or store in Cloud).

Going on safari is undoubtedly one of the most thrilling and yet overwhelming at the same time. No need to worry, we have put together some guidelines on what to do and not to during the safari:

DO

1. Wear Neutral Colors

When you go on a safari you will spend much of your time in the wilderness so it is important to choose colors that match your surroundings. Bright colors will distract the animals or even make them leave. While some dark colors such as dark blue or black will attract insects such as tsetse flies or even bugs. The best safari color is Khaki, followed by olive, tans and browns.

2. Packing

Remember to always check the amount of luggage you are allowed to take on the plane. We recommend that a soft bag is used instead of a hard suitcase as it's preferable on safari. Don't forget to put luggage tags on your suitcases (for the airplane)

3. Safety

Every area (any where in the world) can be unsafe at times. Please take common precautions at all times and never walk alone especially at night or in run-down areas!

4. Bring mosquito repellent and sunscreen

Mosquitos and tsetse flies can be an annoyance while on safari, and both can carry diseases such as malaria and dengue fever. Bring some insect repellent along with you. A lot of areas in Africa are affected by Malaria – we strongly recommend that you take your anti-malaria medication. Take your medication exactly as its prescribed and directed, don't skip any medication!

5. Tipping

Tipping for guides and drivers is always not a mandatory but very much appreciated since an enormous percentage of their wages, come from the gratuities.. We suggest atleast USD 10 Per Person per day

6. Punctuality

Please be on time for the game drives. If you run late you may delay the rest of the trip or miss something wonderful!

7. Respect your Guides

Your driver and guide is complete with experience, information and knowledge of all the areas that you will be visiting. Be sure to ask them lots of questions and feel free to chat to them about anything. Never ignore their recommendations and safety protocol. Remember, part of your guide's job involves keeping you and your fellow travelers safe and alive.

8. Climate

Always remember that the African Sun may look gentle but it is strong and can be harsh. Too much sun can lead to headaches, dehydration, nausea and dizziness. Rather look after yourself by using sun screen and a hat

9. Passports, Documents and Valuables

Please make sure that you keep your passport, documents and any other valuables with you at all times! We recommend that a copy of these documents should be made and kept in another safe place in case something happens to the originals. Never leave valuables alone and remember you are on safari, so expensive and valuable jewellery is not necessary.

DON'Ts

Before you begin your guided game drive or walking tour, always remember that you are a guest in the animals' territory and respecting them and their space is imperative.

1. Call out animals or Talk Loudly

Don't try to call out to animals or get their attention. That means no whistling at them or imitating animal sounds, clapping your hands, smacking the vehicle or throwing objects. We don't want to hinder a hunt or cause an animal to abandon or lose a hard-earned meal. Loud noises could spook away the very animals you're attempting to bring closer or in the case of big animals such as elephants, you may actually trigger a charge. Your guide will brief you on the importance of proximity to predators and large animals.

2. Unfenced Camps or Lodges

If you are staying in an unfenced camp, don't walk alone around the camp. Animals have a much better eyesight than you, thus, they will see you before you see them. Always be accompanied by a guide or an armed ranger.

3. Littering

Be mindful and respectful of the plants and wildlife around you. The wilderness is not a trash site! Everything that you bring in with you must not be left behind, which means that you do not throw your trash in the wilderness! Recyclable and non recyclable items tossed on the ground is not only unsightly, but can choke or poison animals and birds.

4. Don't get out of Vehicle

This one seems quite evident, but many people ignore this rule and they get out of the vehicle or in some cases, they will have their limbs outside the car to take pictures of the wildlife! This is a very dangerous thing to do. The animals have become accustomed to game viewing vehicles, and they do not see them as a threat. Therefore, as long as you stay in the car, you are safe. However, if you get out of the vehicle, this changes everything, and you are now perceived as a threat and in jeopardy! Unless your guide tells you that you can get out of the vehicle, please stay inside!

5. Don't be rude to locals

Don't be disrespectful toward the cultures and beliefs of the African people. Treat people the way you would like to be treated. Be courteous and respectful of the locals you visit, and you will learn a lot from them and also gain a new perspective on life! While communicating to them, you do not have to yell at them! Don't rush them by asking many questions right away, take your time. Start your conversation, by greeting people first. Try to learn how to say "hello, and how are you?" in the local dialect, and wait for their reply before asking questions. If you want to take pictures of the locals or their homes, ask for their permission first.

6. Don't Feed the animals

Feeding wild animals doesn't just cause them harm from ingesting things they are not used to, it also causes longer term damage that affects their behavior and could put them at risk. It upsets their diet and leads to human dependence

7. Currency

When you need to exchange your currency avoid any exchanges on the street or in other areas that may seem suspect. Hotels, Camps and Lodges can change money, but sometimes the rate is slightly lower. We recommend that you visit an accredited Bureau de Change. Ask your driver to help you with this.

8. Drinking Water

Do not drink water from the taps at all, it might not be safe! We rather recommend that you drink bottled water at all times to prevent any illness. You may use the tap water to rinse your mouth when brushing your teeth!

SPECIAL HEALTH CASES

Even though our drivers/guides are well prepared to handle any health related emergency cases that may arise during your safari by either offering first aid services or rushing you to the nearby health facility, it is very important that you let us know of any special health cases you may have so that we can be on the alert. Remember your safety during the safari is paramount.